



WET SOUNDS *ICON 8 LED* **INSTALLATION INSTRUCTIONS**



Step 1

Make sure you have all of the required parts. You will need an **ICON 8 LED** kit (see [pic 1](#)).

If you have swivel clamps and are adding LEDs, you will need the 6-pin connector (see [pic 2](#)).

pic 1



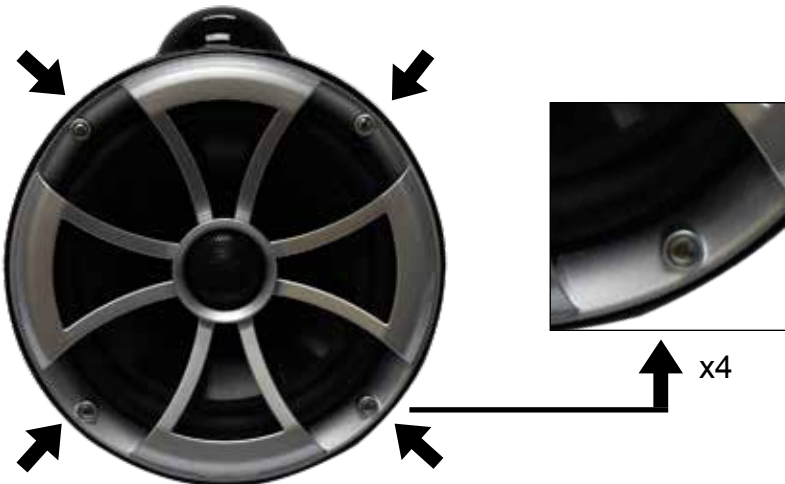
pic 2



Step 2

Remove the 4 screws holding the grill and driver into the housing. (see ➔ on [pic 3](#) for screw locations)

pic 3

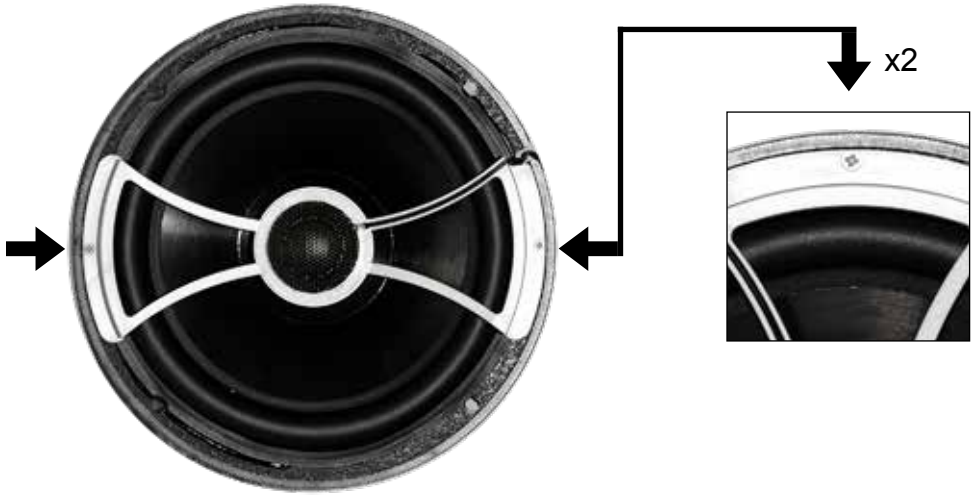




Step 3

Remove 2 screws holding tweeter bridge to mid driver.
(see → on [pic 4](#) for screw locations)

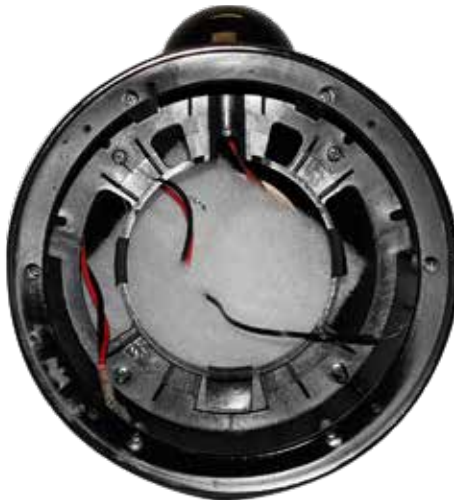
[pic 4](#)



Step 4

Remove mid and grill, unplug all harnesses (see [pic 5](#))

[pic 5](#)





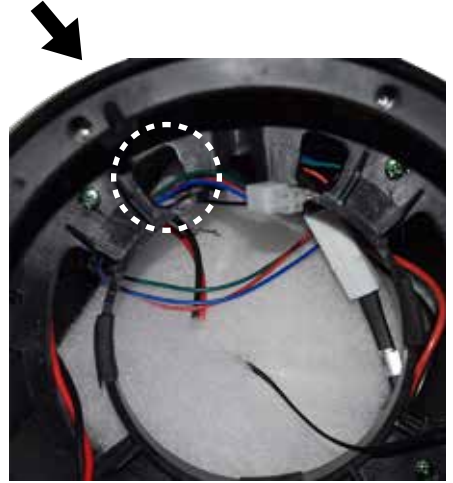
Step 5

If you are using Swivel Clamps - install swivel base. Be sure to use bolts with rubber gaskets (see [pic 6](#)) and route wiring through sub frame (see ➔ to opening in [pic 7](#))

pic 6



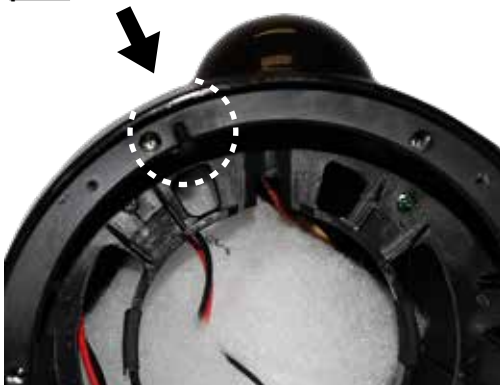
pic 7



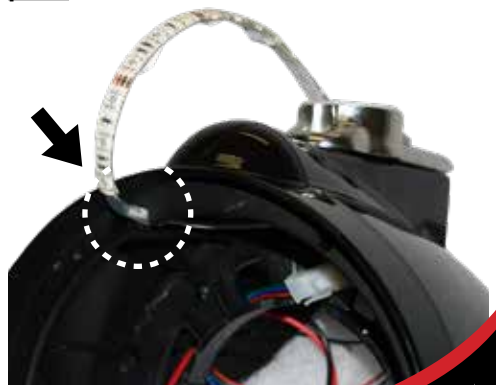
Step 6

Route the LED and tweeter wiring through notch in housing. LED wiring should be towards the outer of ring and tweeter toward the inner. Cut back the clear insulation on the LED wire if needed (see ➔ to notch in [pic 8](#) and [9](#)).

pic 8



pic 9



Step 7

Plug in mid driver and tweeter wires, then route wires through notch in mid driver as well as notch in plastic ring (see → to notch pic 10 and 11). See pic 12 for proper layering: first grill with tweeter bridge, then led ring then mid driver.

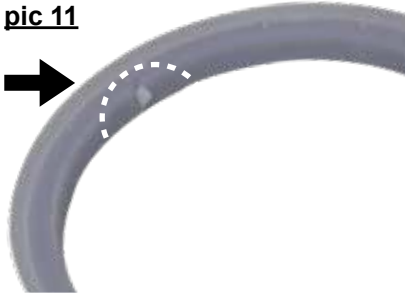
pic 10



pic 12



pic 11



Step 8

Reinstall your mid driver, be careful not to pinch your wires (see pic 13). Then remove adhesive from LED strip and apply to rim of housing (see pic 14).

pic 13



pic 14





Step 9

Using the longer screws, and removing the rubber washers from your old screws (see pic 15). Reinstall the grill aligning the notches in the tweeter bridge and mounting holes. Make sure your grill and ring are completely seated (see pic 16).

pic 15



pic 16



Step 10

Test you lighting and sound. Enjoy your Wet Sounds product!



If you have any questions, please call
the Wet Sounds TECH LINE

877-938-7757

Or email us at info@wetsounds.com

wet sounds
WETSOUNDS.COM

